

FIAT LUX

The Power of Place



Doe Library (detail), by Lin Salamo

What can we learn about the library through the eyes of artists? In this selection, artists from on and off campus offer a variety of intimate and imposing depictions of Doe Library.

The portrayals of Doe's architecture may remind us of the metaphor "temples of scholarship"—libraries as secular sanctuaries that provide uniquely conducive spaces for people to gather, dialogue, muse, learn and imagine.

The cover image is by **Lin Salamo**, who spent three decades on the dedicated team at the Library's Mark Twain Papers and Project. She remembers walking down the hill toward Doe each morning "enjoying the play of light on the handsome façade, the stone balustrades, the great arched window, and the artichoke finials—a peaceful and beautiful sight." Now retired and painting fulltime,

continued on page 4-5

FROM TOM LEONARD, THE KENNETH AND DOROTHY HILL UNIVERSITY LIBRARIAN

Under a New Lens



This summer faculty members completed a year of close study—not in the Library, but of the Library. Representing fields with such different needs as art history, statistics, and soil science, they concluded that *“the centrality of the Library to the range of learning and research at Berkeley warrants a serious strategy of major reinvestment.”* The Commission on the Future of the UC Berkeley Library was charged by the Provost and by the Chair of the Academic Senate; its report is surely one of the most thoughtful pictures of Berkeley on the desk of new Chancellor Nicholas Dirks.

Research libraries everywhere can learn from the Commission because it listened to a far-reaching library community, including our Library Advisory Board, as well as

many experts from peer libraries and Silicon Valley. The report sums up what was learned and answers the question: What is to be done . . . at Berkeley now?

For those of us in the Library who worked with the Commission these many months, the philosophy of co-chairs Carla Hesse (History) and Jim Midgley (Social Welfare) seemed to be: Assume Nothing. We found this refreshing, and certainly the right habit of mind in a digital age. The report begins, however, with caution from Victor Hugo that no modern wonder kills older ways of learning.

In addition to the advice that the Commission solicited (more than a dozen appendixes), the Commission reviewed the strategic planning of the library in two Re-Envisioning reports that we made public before the summer break last year. We heard from faculty members then that we were moving too fast and in some directions that made them worry. It is, therefore, gratifying to find the Commission endorsing our plans for streamlining how we manage people and reducing the number (now 24) of places where we offer full services. The Commission also endorses the web redesign for our users that we have already begun.

The Commission emphasizes that the knowledge the Library holds is, more than any other thing we do on campus, an essential gift to the next generation. The Commission spent much time with undergraduates and through them became excited about our “bold vision for Moffitt as a future-oriented space for study

IT STARTS HERE

Berkeley's excellence is founded on its library. Opened in 1868 with one thousand books, the University Library now holds over eleven million volumes, and ranks as one of the world's great research collections. Join us in supporting the growth and preservation of this stellar library.



and investigation.” The call for librarians to do more to make scholarly resources open and useful in the new ways that the Internet allows is welcome to every Berkeley librarian (professionals whom the Commission has gone out of its way to praise, after carefully listening to what they had to say).

The strategic planning we could do in the midst of the Great Recession is not the same strategic planning we can do now, and we will get farther with faculty helping to lead. The good news is this: When it comes to the Library, Berkeley is of one mind, though of course not of one opinion. My faculty colleagues all agree: *“Libraries—as both places and services—will be more, rather than less, critical to University research and teaching in the next twenty years.”* ☀

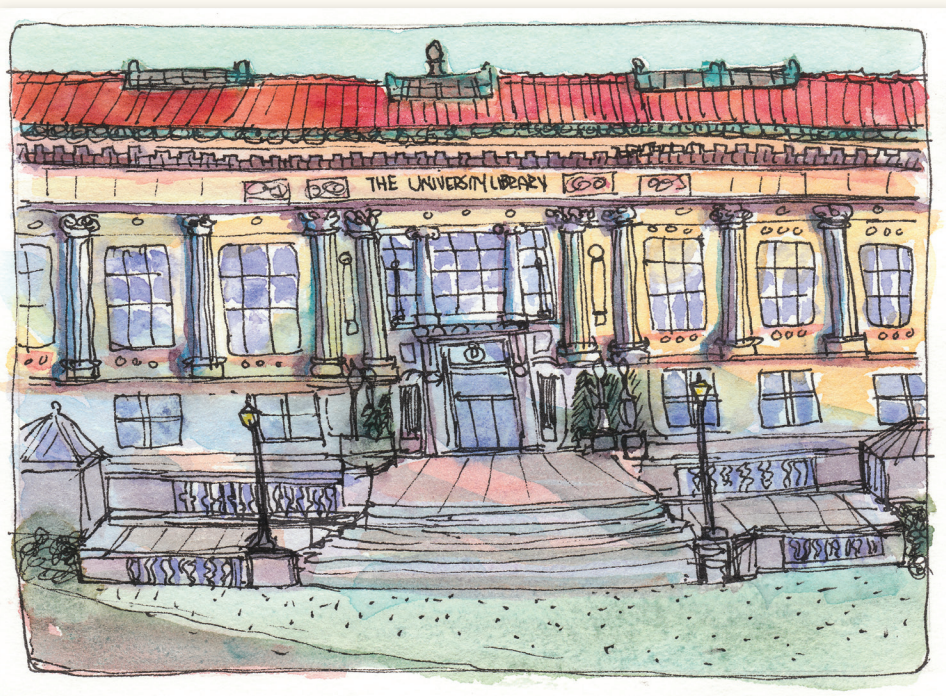
This sketch of the beloved Morrison Library by Cristina Siegerist conveys its comfortable welcome. A Bay Area artist and computer scientist, Cristina enjoys experimenting with different media to capture local colors. “After a long day walking and sketching on campus,” she recalls, “I took refuge in the comfortable armchairs and the relaxed ambiance of the Morrison. It was the best sketch of the day!” Her work—including scientific visualization, ceramics, drawing and painting—can be seen at www.cristinasiegerist.com.

T H E P O W E R

continued from page 1

Lin enjoys having “time to experiment and to push myself. Inevitably, the more I try to capture what I see with my mind’s eye, the ‘behinder I get.’ But it is wonderful to be trying and—once in a while—to feel that I have succeeded.” See more of Lin’s work at www.mesart.com/linsalamo

Jana Bouc’s watercolor of the north façade of Doe softens its grandeur, as if the Greco-Roman architecture’s majesty were



imbued with the affection felt for the library. A Bay Area artist and watercolor teacher, Jana works primarily in oils and watercolor. She can often be found sketching and painting in cafes, parks, on city streets, or in her light-filled studio (which she calls “my favorite place in the world”). Her popular blog (JanasJournal.com) recounts the adventures and challenges of an artist’s life with humor and insight.

Sharada Prasad is a Ph.D. student at the Energy and Resources Group whose research focuses on water and sanitation challenges in South Asian countries. He says, “I love Doe Library for the inspiration it provides to a student and a photographer alike. The beauty of the architecture is a feast for the eyes, but a challenge for the camera to capture. Photographing Doe makes me lose track of time as easily as the students studying there.”



A 2005 restoration project returned the North Reading Room to its original 1910 glory. The design for these hand cast bronze table lamps was based on archival photographs at the Bancroft Library.

O F P L A C E



Many images reflect the inspiration offered by the Library's majesty and the visual intrigue of lines of perspective through its expansive spaces, as in this image of the North Reading Room by **Joe Parks**. This magnificent room has been called one of the greatest architectural accomplishments of the Beaux-Arts period. A marble frame above the central entrance displays a Biblical inscription from Proverbs, reading "Wisdom has built herself a house; 'come and eat my bread, drink the wine I have prepared.'"



Hinting at the potentially transformative character of visiting the library, these images of staircases by Sharada Prasad evoke a ritual passage, as users proceed towards the collections, the reading rooms, or to seek the guidance of a reference librarian.

The stairs depicted above lead from the Bernice Layne Brown Gallery to the second floor, and the spiral staircases below connect users to the four levels of the David P. Gardner Stacks, which house some 2 million volumes primarily in the humanities and social sciences.



The 2013 Charlene Conrad Liebau **LIBRARY**

On a campus with so many high-caliber undergraduates, it is an annual challenge—and pleasure—to select students to honor with the Library's research prize. The winners, presented below, have awed staff and faculty jurors with their intellectual passion and their creative and sophisticated use of the library.

This year, the prize is named for its generous patron, Charlene Conrad Liebau '60, president of the Library Advisory Board. Her involvement with the Library has made her appreciate how it is "integrated into active learning and teaching for undergraduates. I am encouraged to know that faculty members are bringing students into the Library to conduct original research using primary materials. Learning how to ask the important questions and to evaluate data is a very exciting process!"

Stephanie Au '13



Succession in Galls on *Syzygium malaccense* and their Impact on Leaf Aging

INTEGRATIVE BIOLOGY

PROFESSOR GEORGE RODERICK

Stephanie's project was developed over the course of a semester of field research at the UC Gump

Research Station on the island of Moorea in French Polynesia. In exploring her research question, she utilized a wide range of electronic resources: scholarly articles, plant identification databases, monographs, reference works, and GIS (Geographic Information Systems) data. Dr. Roderick called her work "a model in all respects."

Alana Mailes '12



Tracing the Influence of Giulio Caccini's *Le nuove musiche* on Seventeenth- Century English

Composers

MUSIC

PROFESSOR DAVITT MORONEY

Alana's honors project has resulted, according to Dr. Moroney, in "new

research in untouched territory." She delved deeply into the Library's collections, examining original manuscripts, microforms, books, journals, musical recordings and scores. In addition, her research took her to London and Oxford to view 17th-century English source material. Alana—who also won the Eisner Prize and was a Haas Scholar—is now doing graduate work at Cambridge in 17th-century Italian vocal music.

Matej Silecky '16



The Post-Soviet Development of Elite- Level Athletics in Kazakhstan, Kyrgyzstan, Tajikistan, Turkmenistan and Uzbekistan

NEAR EASTERN STUDIES

PROFESSOR SANJYOT

MEHENDALE

A competitive figure skater who trained in Ukraine and Russia, Matej was a first-semester freshman when his paper was assigned. Through energetic reading

PRIZE *for* UNDERGRADUATE RESEARCH

and synthesizing, attending a library research presentation, and consulting reference librarians, he developed his understanding about elite sport participation in each of the five former Soviet republics. In the process, Matej acquired expertise in using the Library collections that will stand him well during his Berkeley studies.

Paige M. Walker '12



Medieval Female Spirituality and the Wound of Christ in Folio 331r of Bonne of Luxembourg's Prayer Book

HISTORY OF ART
PROFESSOR DILIANA
ANGELOVA

This honors thesis utilized national and local catalogs, databases of images and articles, manuscripts and rare books in Bancroft Library, digitized primary source collections, and books from local and off-site facilities. In the research process, Paige demonstrated a sophisticated understanding of research tools as well as a recognition of the value of serendipitous discoveries in the stacks. She is currently applying to doctoral programs in art history.

“I tell incoming students that the Library is where you'll do most of your real learning.”

— A RECENT GRADUATE

2013 Honorable Mentions

Christian Duran '13



Lost in Trans-Nation: Unearthing Chicano Identity in Daniel Venegas's "Las Aventuras de Don Chipote o Cuando Los Pericos Mamen"

ENGLISH

PROFESSOR SCOTT SAUL

Before Christian started digging, little was

known about Venegas's personal life. Christian retrieved personal documents from a genealogical resource; scoured contemporary newspapers for references to the author; uncovered issues of a rare publication within Bancroft Library; and found resources to provide historical context to his investigation. His discoveries, according to Dr. Saul, are “a significant contribution to Chicano Studies and American literary history.”

Alexandra Polasko '15

What's in Your Water?

CIVIL ENGINEERING

PROFESSOR LISA ALVAREZ-COHEN

Alexandra's research examines the bacterium *Dehalococcoides* and ways to enhance and maintain its biodegradation of the harmful chemical compound trichloroethene (TCE) in drinking water. Dr. Alvarez-Cohen praised her research skills as “the most impressive I've ever encountered in a second year undergraduate student.” Alexandra noted

continued on page 9

Closing the Information Gap

LIBRARIAN SHARES KNOWLEDGE WITH PEERS IN DEVELOPING COUNTRIES



Bette Anton has seen first-hand how “access to information can be a terrible problem in developing countries.” For the past six years she has been working to ensure that clinicians and medical students in India, Nepal, Guatemala, and Egypt can connect to the best current resources in vision care. As she says, “without the information, the research and the clinical practice in the field can’t go forward.”

Together with heading up Berkeley’s well-used Fong Optometry/Health Sciences Library, Bette has been collaborating with her peers abroad to help develop their libraries. This past spring, she helped organize and teach a workshop in Hyderabad for librarians serving eight eye institutes—each of which, she says, “is an amazing place.”

Bette Anton began her University Library career in 1979, with a freshly-minted MLIS from Berkeley’s library school, and has served as the head of the Fong Optometry/Health Sciences Library since 1993. Dennis Levi, dean of the School of Optometry, praises her as “very energetic and highly effective.”

“ I feel as if my whole life—my values, aspirations and skills—have come together in order for me to do this, ”

she says. “These are places where hundreds of people are lined up for eye procedures, and come out able to see. Playing a role in supporting that is incredible.”

Bette was initially inspired by Seva Foundation-sponsored workshops in India and Nepal that she attended in 2007 and 2008.

The workshops she has been organizing are part of a 3-year grant from Elsevier Foundation (the Innovative Libraries in Developing Countries program). Additional support has been provided through the Seva Foundation and the Association of Vision Science Librarians. A three-minute video produced by Elsevier about the program can be viewed at tinyurl.com/BetteAnton.

Bette’s interest in bioethics—especially access to information and health communication—undergirds her work supporting peers in developing countries. Her expertise in this area has led to periodic presentations at bioethics conferences in Italy. ☀



Shown in front of Hyderabad's Charminar are workshop participants from eye institutes in Guatemala, Egypt, and India as well as from Seva Foundation, UC Berkeley, and the NIH Library. As one participant, Antim Goswami, commented, "We have learned the technical skills to help the doctors and manage the hospital."



Patients in line at a large rural hospital in Madhya Pradesh, their sari colors indicating the type of procedure. This facility, Sadguru Netra Chikitsalaya, performs 800 to 1,000 eye surgeries a day. Ninety percent of the world's visually impaired live in developing countries.

continued from page 7

that "even though the evidence for my thesis did mainly come from academic journals, the support for my passion about this topic came from the anthropologists, the philosophers, the authors, the lawyers, the economists, the councilmen, and the government."

Daniel Wikey '12

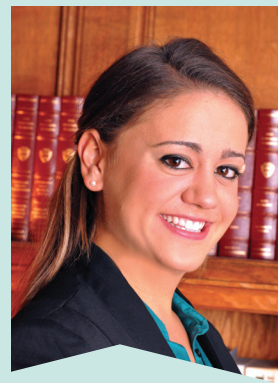
Man as Magician, Man as Machine: Narrative, Wonder, and Politics in Twentieth-Century Lie Detection

ANTHROPOLOGY

PROFESSOR CORI HAYDEN

Daniel's extensive research in the Library's collections on early 20th century American religion, feminist and critical race theory, folklore, and the history of science and technology enabled his honors thesis to make "a number of original contributions to histories of the lie detector test," Dr. Hayden said.

Jolene Xie '13



Reciprocity at the Elizabethan Court: The Earl of Leicester and Private Gifts in a Political Arena

HISTORY OF ART

PROFESSOR ELIZABETH A.

HONIG

Jolene's paper investigated the struggle for

representation and autonomy at the Elizabethan court. Dr. Honig commented on how well Jolene's "exemplary research" balanced primary, secondary historical, and theoretical sources. In the process, Jolene discovered the value of iterative research and the importance of reaching beyond her primary discipline for sources. 🌟



UNIVERSITY LIBRARY ADVISORY BOARD | 2013-2014

CHAIRMAN

Nicholas Dirks
Chancellor of the University

VICE CHAIRMAN

Thomas C. Leonard '73
Kenneth and Dorothy Hill University Librarian

PRESIDENT

Charlene C. Liebau '60

VICE PRESIDENTS

Jason Di Napoli '90
Robert G. O'Donnell '65, '66

William M. Banks

Annie Barrows '84
Author Trustee

Janice Bea

Robert M. Berdahl
Chancellor Emeritus

Scott Biddy
Vice Chancellor, University Relations

J. Dennis Bonney '56

George W. Breslauer
Executive Vice Chancellor and Provost

Michael Chabon
Author Trustee

Carol Kavanagh Clarke

Paul D. Chapman

Paul Churchill '82, '86

Frances Dinkelspiel

David Duer '68
Director, Development & External Relations

William R. Ellis, Jr.
Vice Chancellor Emeritus

John B. Gage '75

Richard Greene '60, '63

Kathleen Gutierrez '10

Robert D. Haas '64
Robert Hass
Library Campaign Co-Chairs

Kathleen G. Hutchinson '65

S. Allan Johnson '62, '69

Val Kilmer
Artist Trustee

Carole Krumland '67

Margaretta Lovell
Chair, Academic Senate Library Committee

Megan Majd
Undergraduate Student Member

Rita Moreno
Artist Trustee

Randi Glass Murray

Harvey L. Myman '70, '92

Carolyn P. Paxton '70

Lila S. Rich '55

Michael Roberts

W. Timothy Ryan '59, '62

Michelle Felice Segal '91

Rishi N. Sharma '02, '05

Stephen M. Silberstein '64, '77

Sam Singer

Miriam D. Starc

Richard K. Sun '86, '88

Elaine C. Tennant
Director, The Bancroft Library

Paige Thomas '86

Carol J. Upshaw '58

Judy C. Webb '60

Kirsten E. Weisser '81
Chair, Council of the Friends of the Bancroft Library

Lesley G. Yeary

Theo Zaninovich '64
Library Representative to the UCB Foundation

HONORARY ADVISORY BOARD

Richard C. Atkinson
President Emeritus, University of California

Mollie P. Collins '65

John Cummins

Marilyn J. Drew '53

Shannon M. Drew '50

Troy Duster

Charles B. Faulhaber
Director Emeritus, Bancroft Library

David Pierpont Gardner '59, '66
President Emeritus, University of California

J. R. K. Kantor '57, '60
Emeritus University Archivist

Yvonne Koshland '68, '70

Watson M. Laetsch

Raymond Lifchez '72

John W. Rosston '42

Camilla M. Smith

G. Stuart Spence '53

Janet Stanford '59

Katharine Thompson '48

Sheryl Wong '67, '68

FIAT LUX, or LET THERE BE LIGHT, is the motto of the University of California. The Fiat Lux newsletter of the Library at the University of California, Berkeley is published quarterly by the Library Development Office, University of California, Berkeley.

Your feedback and suggestions are warmly invited. You can reach us at (510) 642-9377 or give@library.berkeley.edu

Printed on recycled paper with soy-based ink.

KENNETH and DOROTHY HILL UNIVERSITY LIBRARIAN
Thomas C. Leonard

DIRECTOR of DEVELOPMENT and EXTERNAL RELATIONS
David Duer

DIRECTOR of COMMUNICATIONS
Damaris Moore

PHOTOGRAPHY
Peg Skorpinski p. 2, 6-7, 9, 11

THEN & NOW



To the right and below, Berkeley's Free Speech Movement Café.

Above, 1944 photo by Hikaru Iwasaki (from the Bancroft Library), showing customers at one of New York City's Automat restaurants.

From the War Relocation Authority Photographs of Japanese-American Evacuation and Resettlement.

THE CAMPUS BUZZ

Providers of every variety of coffee drinks—including the ominously named “red-eyes”—abound on campus. The Free Speech Movement Café in Moffitt Library, with both indoor and outdoor seating, remains a favorite; its concoctions reflect the latest range of refinements beyond coffee's first use in 15th century Yemen, where native religious ceremonies featured the beverage. Those whose curiosity is stimulated can learn more about coffee's botany, history, economy and ecology, health effects and even metaphysics in collections available at the Bioscience, Anthropology, Business, Bancroft, East Asian and Doe libraries.



UNIVERSITY OF CALIFORNIA LIBRARY
ROOM 131 DOE LIBRARY
BERKELEY, CALIFORNIA 94720-6000

NONPROFIT ORGANIZATION
U.S. POSTAGE
PAID
BERKELEY, CALIFORNIA
PERMIT NO. 45

EXHIBITS

at the Library

ALL LIBRARY EVENTS AND EXHIBITS can be found at lib.berkeley.edu/give.
ALL ARE FREE AND OPEN TO THE PUBLIC.

COMICS, CARTOONS, AND FUNNY PAPERS: THE RUBE GOLDBERG, PHIL FRANK, AND GUS ARRIOLA ARCHIVES AT BANCROFT

The Bancroft Library Gallery
Sept. 25, 2013 through Feb. 2014
check lib.berkeley.edu for hours

Phil Frank's long-running cartoon strips *Travels with Farley* and *Farley* have recently joined the drawings of Rube Goldberg, one of UC Berkeley's best-known alumni, and of Gus Arriola, creator of the ever popular *Gordo* strip, at the Bancroft Library. In addition to the work of these cartoonists, the exhibit will feature comics by underground artist Dan O'Neill, creator of *Odd Bodkins*, and Lou Grant, editorial cartoonist for the *Oakland Tribune* from 1954 to 1986. The show will highlight both the topical and the timeless nature of the cartoon, one of the oldest forms of visual art known to mankind.

THE RISE OF ISLAM THROUGH ITS GOLDEN AGE

Bernice Layne Brown Gallery, Doe Library
Sept. 9, 2013 through Feb. 2014
check lib.berkeley.edu for hours

This exhibit will display items from the University Library collections to illustrate portions of the history of Islam. The religion was founded in 622 CE by Muhammad in Medina, where the prophet established the first Islamic city/state. A century after his death, Islamic territory included the Middle East, North Africa, Iberian Peninsula, Central Asia, and the Indian subcontinent. Baghdad—the center of power during the Islamic Golden Age, from the mid-8th to the mid-13th century—became the intellectual center for literature, art, architecture, science, mathematics, philosophy, medicine, and education.

